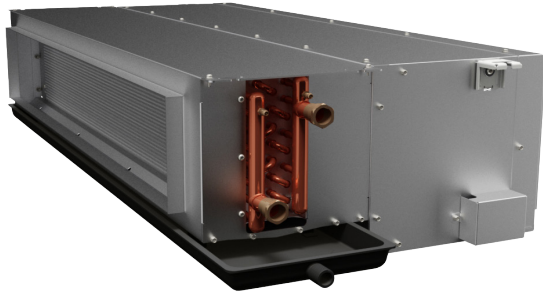




Air Conditioning
a member of **DAIKIN** group



Fan & Coil Horizontal Fixed **Series**

Standard **Configuration**

- Capacities from 400 CFM to 2,000 CFM
- Available in 4 cold rows
- Centrifugal fan (3 speeds)
- Voltage 120 / 1 / 60
- Auxiliary condensate tray
- Plenum - Optional
- Disposable filter - Optional
- Sliding filter for easy maintenance

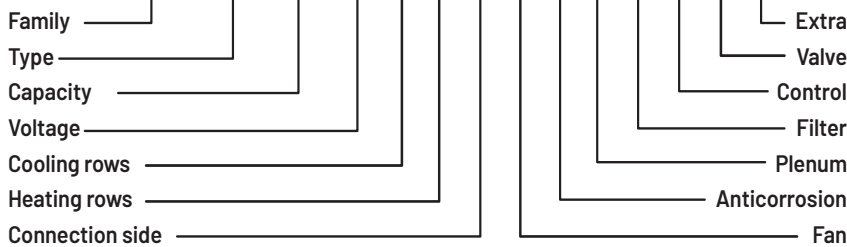
Additional **Configuration**

- 3 cold rows plus 1 heating row
- 4 cold rows plus 2 heating row (Model 1600 and 2000)

DIMENSIONS

	400 CFM		600 CFM		800 CFM		1,000 CFM		1,200 CFM		1,600 CFM		2,000 CFM	
	cm	in	cm	in	cm	in	cm	in	cm	in	cm	in	cm	in
Lenght	97.79	38 1/2"	107.95	42 1/2"	123.19	48 1/2"	138.75	54 5/8"	153.67	60 1/2"	122.24	48 1/8"	124.77	49 1/8"
Widht	59.06	23 1/4"	59.06	23 1/4"	59.06	23 1/4"	61.60	24 1/4"	61.60	24 1/4"	87.00	34 1/4"	87.00	34 1/4"
Height	27.31	10 3/4"	27.31	10 3/4"	27.31	10 3/4"	29.21	11 1/2"	29.21	11 1/2"	48.26	19"	48.26	19"

CLIFC-H-400-0-4-0-R-C-0-P-D-N-2-0



For more information about nomenclatures, please access the following website:



www.clima-flex.com/eng/clifc-fix-eng/