



Air Conditioning



The **Comfort Flex** air purifying unit **Health-Air** is designed to mitigate pollution and the spread of respiratory diseases within indoor areas or closed rooms.

Its excellent design provides a purifying capacity air that can cover from 160 ft<sup>2</sup> of surface, up to approximately 330 ft<sup>2</sup>.\*

To achieve this, the unit has high efficiency **HEPA** (*High Efficiency Particulate Air*) filters inside, these filters are previously subjected to rigorous tests of efficiency under the guidelines of the 52.2 standard developed by the **American Society of Heating Engineers, Refrigeration and Air Conditioning (ASHRAE)**. To improve filtration results, the air purifying unit has a smaller pre-filter to increase the durability of the **HEPA** main filters.

The equipment also has ultraviolet light **UVC** for germicidal effect.

Main features

- 500 CFMs.
- Superior air injection.
- Air return on 1 side.
- HEPA Filters (99.97% Efficiency for particles of 0.3 µm). This filter removes viruses, bacteria and fungi when passing through it.
- MERV 8 Prefilters (Retention of particles of 3.0 to 10.0 µm).
- UVC type germicidal lamp (filament of Quartz and 254 nm wavelength, free of ozone).
- Adjustable motor.
- Galvanized steel cabinet acoustically insulated.
- Oven baked paint.
- Voltage 115 / 1 / 60 Hz.
- 11 ½ ft power cable.
- Vertical Design.
- Filter saturation indicator light.
- Automatic stop in case of saturation of filters.
- Multi-position wheels with independent brakes.
- Transportable, easy to move.
- Automatic deactivation of the UVC lamp for maintenance.



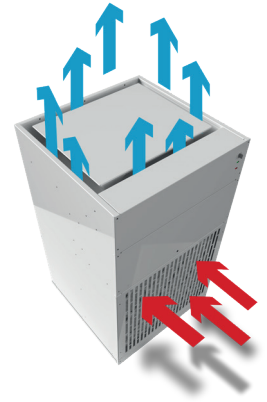
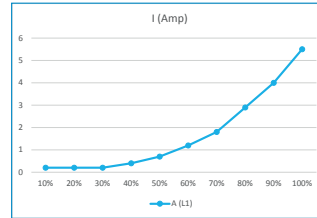
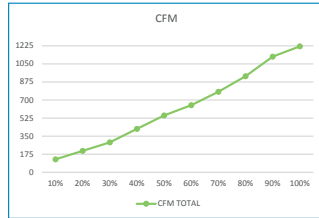
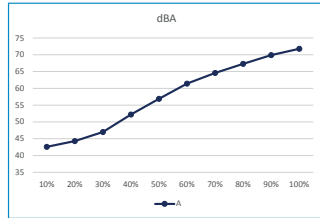
Manufacturer	Capacity CFM	Fan		Voltage	Pre Filters		Filters		Lamp	Control
		Type	Quantity		Type	Quantity	Type	Quantity	Type	
Clima-Flex	500	Centrifuge	1	115 / 1 / 60	MERV 8	1	HEPA	1	UVC	Digital

\* The purification capacity is measured for a height of 9' 10".

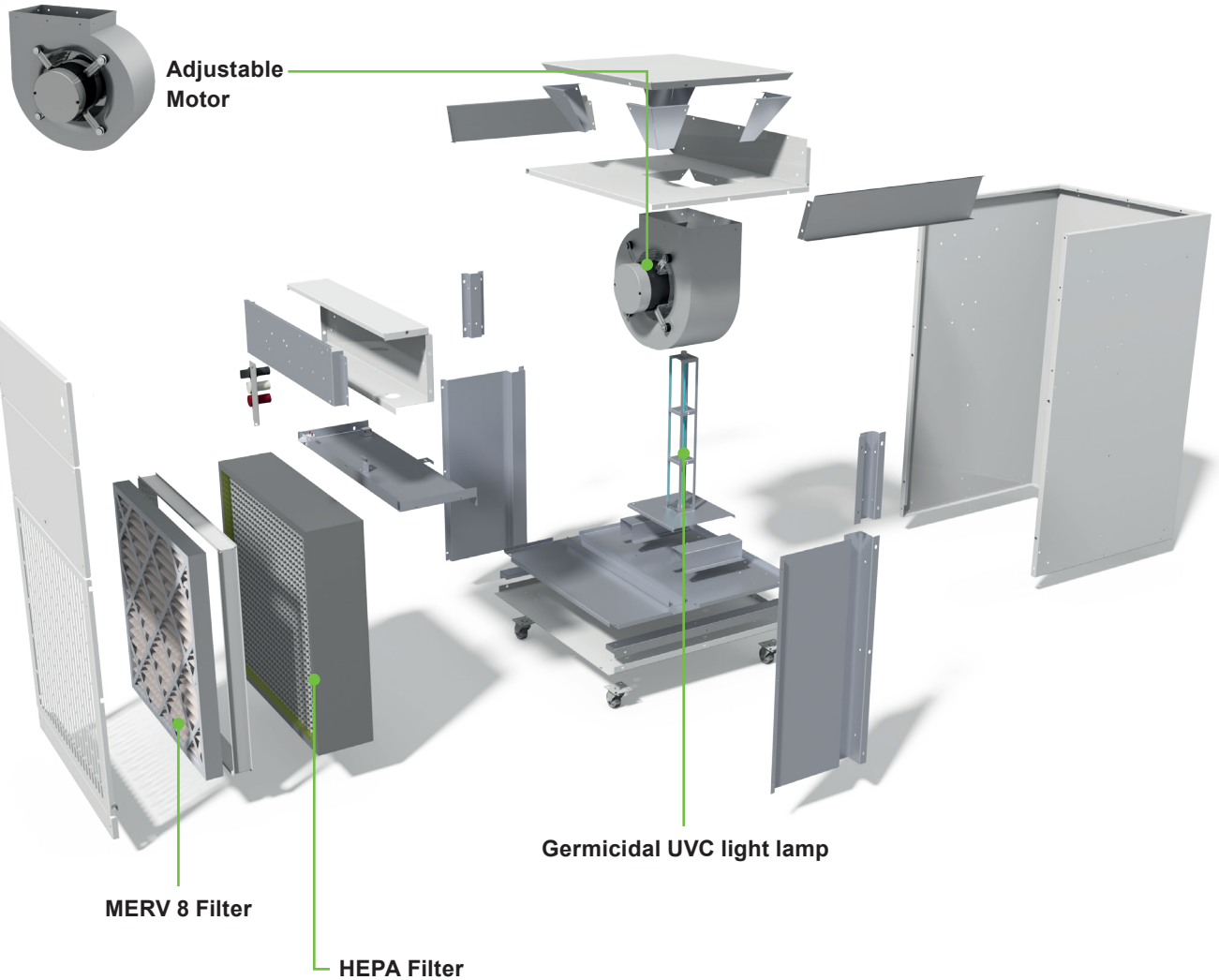
AIR PURIFYING UNIT

WEIGHT (lb)	TOTAL CFM	CONSUMPTION								
		dBA		CURRENT MOTOR	MOTOR DATA					
		A*	A (L1)	#MOTOR	POWER(kw)	POWER(HP)	RPM	V / Ø / F	i(A) MAX	
174	500	56.9	0.7	1	0.56	¾	1,800	115 / 1 / 60	5.8	

\* The measurement is taken at 3.28 ft x2 with free discharge



## Main components



# AIR PURIFYING UNIT

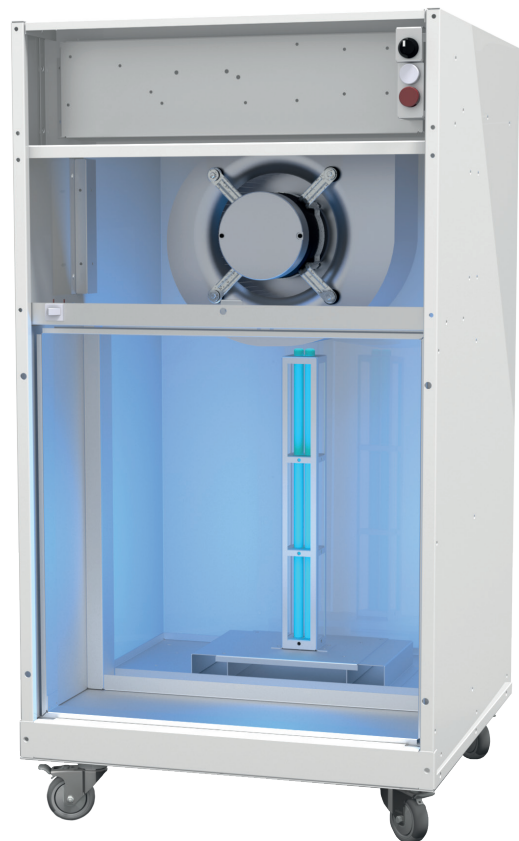
## Especificaciones

- The HEPA filter has an efficiency of 99.97%, which allows the removal of particles up to 0.3 µm.
- Standard MERV 8 filter retains particles from 3.0 - 10.0 µm at 35% efficiency.
- Structural engineering and filter seal prevent possible air leaks.
- Portable and easy to move; adaptable to many locations.
- ON / OFF illuminated switch.
- 11 ½ ft long power cable.
- 115 Volts.
- Oven painted cabinet with acoustic insulation.
- UL® Listed (in process).
- 1 year warranty on parts and components, does not include replacements.
- Vertical plenum discharge grids (standar).
- Duct possibility the discharge to reduce the dB emitted by the equipment.



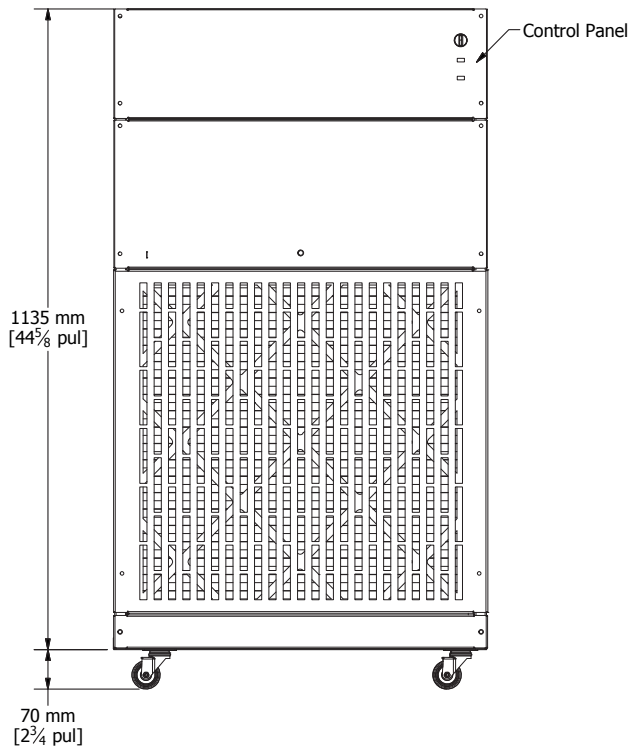
## Frequently asked questions

- **Are the components certified?**  
All components are UL Certified
- **Is there a norm or standard that this unit meets?**  
Factory installed filters meet standard ASHRAE 52.2.
- **What type of accessory will be available to direct the airflow?**  
- Vertical discharge grids (standar).
- **Can the unit be hanged from the ceiling?**  
These options will be include in later versions of the equipment.
- **What is the protocol for safe filter removal?**  
The user manual will include the filter change procedure.
- **What is the lamp's lifetime?**  
18 thousand hours.
- **What is the filter replacement time?**  
Follow the recommendations described in the user manual, the equipment includes devices to monitor filter saturation.

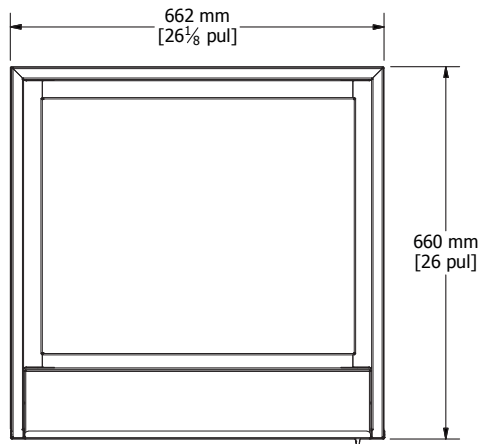
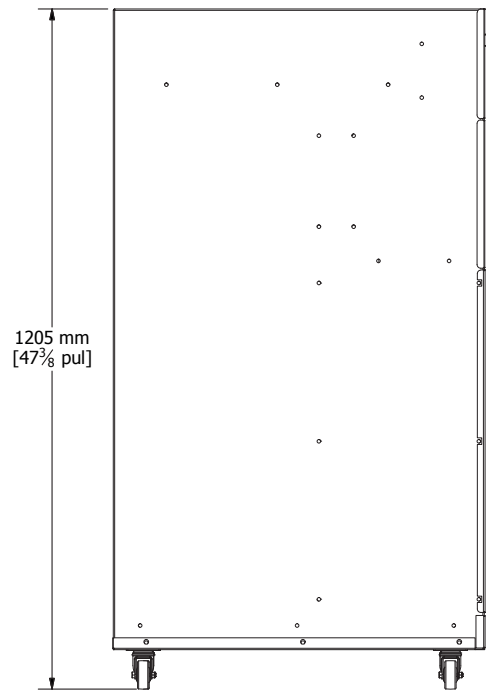




Front View



Side View



Top View

Notes:

- 1 Removable MERV 8 filter
- 1 Removable HEPA filter
- UVC Light lamp
- 1 Centrifugal fan

Isometric View

